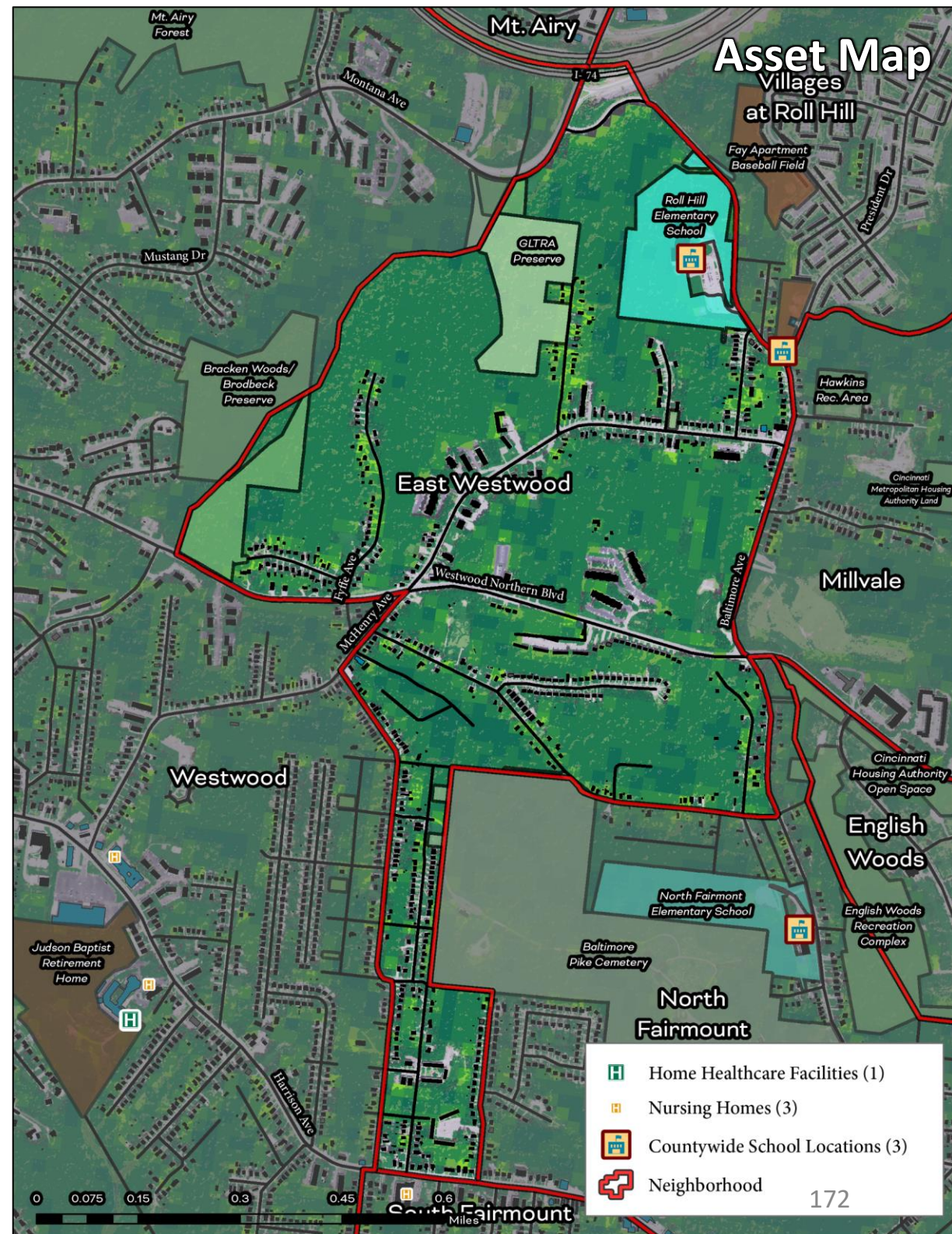


East Westwood

Cincinnati Neighborhood Profile

East Westwood is a predominantly Black neighborhood (74.9%) with 3,324 residents. It has an active community council (East Westwood Improvement Association). The average life expectancy for the neighborhood is 71 (ranked 37th of all communities assessed) and has a high percentage of persons 17 and under (30%). East Westwood has a “very high” prevalence of diabetes (19.8%), asthma (12.9%), kidney disease (4.1%), obesity (46%), and high blood pressure (42.9%) relative to all communities assessed.

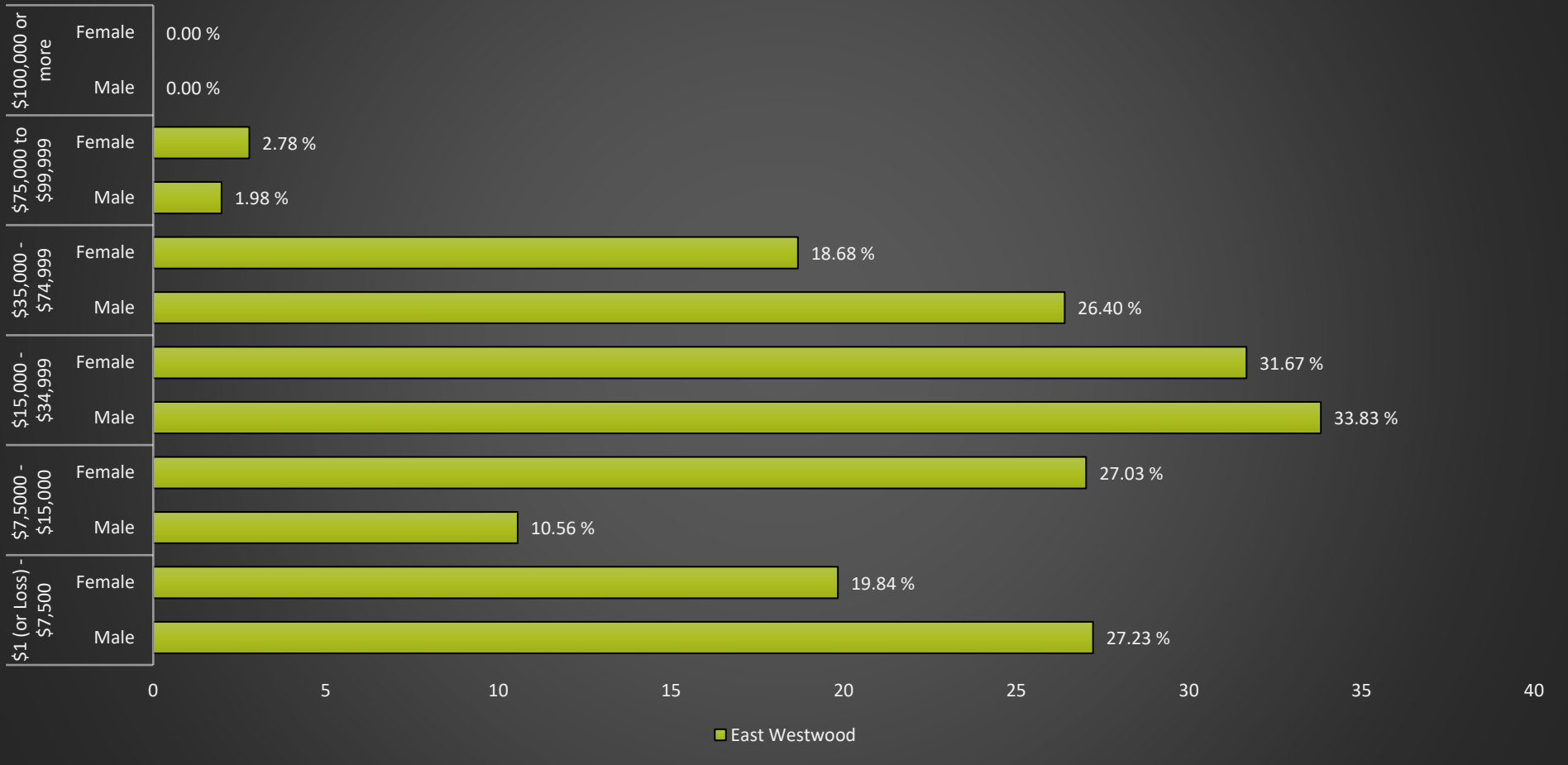
17% of the community lacks health insurance (ranked 36th of all communities assessed). It has ~49% tree canopy cover (ranked 2nd of all communities assessed) and 78.8% of land surface is vegetation (2nd of all communities assessed). It has “low” access to public transit and “below average” walkability. It has “very high” proximity to water pollution sources and “very high” exposure to PM2.5 levels. Around 42.7% of East Westwood residents are living in poverty (ranked 38th of all communities assessed) and 46% of residents are renters spending more than 30% of their income on rent and utilities.



East Westwood

Cincinnati Neighborhood Profile

East Westwood: Annual Income by Gender



East Westwood Notable Indicators

<i>% of Residents Living in Poverty</i>	<i>% of Tree Canopy Coverage</i>	<i>% of Land Surface That is Vegetation</i>
42.7 (ranked 38th for all communities assessed)	49% (ranked 2nd highest for all communities assessed)	78.8% (2nd highest of all communities assessed)

East Westwood

Cincinnati Neighborhood Profile

People			
Indicator	Rank	%	# of Persons
Population	-	-	3,324
Persons over 65	17	9.9%	329
Persons 17 and Under	42	30.0%	996
Children Living w/ Grandparents	16	0.5%	17
Race/Ethnicity:			
Black	-	74.9%	2,489
white	-	11.6%	386
Asian	-	0.5%	17
Other	-	13.0%	432
Latinx	-	0.7%	23
Persons 5 and Older in Households w/ Limited English Ability	10	0.0%	-

Health			
Indicator	Rank	Value	
Life Expectancy	37	71 years	-
Disease Prevalence Estimates:			
	Rank of % w/Condition	% with Condition	Persons with Condition
Asthma	32	12.9%	430
Cancer	8	4.7%	155
Diabetes	39	19.8%	658
High Blood Pressure	35	42.9%	1,426
Heart Disease	31	8.7%	288
Kidney Disease	35	4.1%	136
Obesity	35	46.0%	1,530
Lack of Health Insurance	36	17.0%	566
Persons w/ Independent Living Difficulty	34	3.9%	128
Persons Living w/ Disability	31	14.4%	479

Ecosystems and Infrastructure		
Indicator	Rank	Value
Tree Canopy Coverage	2	49.0%
Greenness of Land Surface	3	78.8%
Percent Land in Parks and Greenspaces	36	7.7%
Impervious Surface	4	16%
Heat Island Exposure	3	0.01
Walkability	-	Below Average
Persons w/ Low-Income and Low Food Access	1	0.0%
Transit Accessibility	-	Low
Daytime Population vs. Resident Population	2	29.1%
Commuters Leaving Each Day	-	1,267
Commuters Using Public Transit	45	31.3%

East Westwood

Cincinnati Neighborhood Profile

Socio-Economic Indicators			
Indicator	Rank	%	#
Persons Living in Poverty	38	42.7%	1,420
SNAP Recipient Households	37	38.2%	528
Educational Attainment:			
Less than High School	-	11.3%	-
HS or Equivalent	-	21.7%	-
Some College	-	13.4%	-
Associate's Degree	-	4.8%	-
Bachelor's Degree or Higher	-	5.0%	-
Educational Attainment Index	40	0.28	-
Extreme Housing Burdens:			
Renter-Occupied Housing (as % of All Housing Units)	34	72.1%	997
Renters Spending 30% of Income or More on Rent + Utilities	44	46.0%	635
Renters Spending 50% of Income or More on Rent + Utilities	42	25.5%	353
Homeowners Spending 30% of Income or More on Mortgage + Utilities	43	29.9%	115
Average Energy Costs (as % of Income)	29	4.8%	-
Persons without Vehicle Access	40	16.0%	533

Built Environmental Hazards		
Indicator	Relative Exposure Level	Value
Traffic Exposure	Low	-
Potential Lead Paint Exposure (Houses Built pre-1960)	Low	50.50%
Cancer Risk from Air Pollution	Low	-
Respiratory Disease Risk from Air Pollution	Moderate	-
Proximity to Water Pollution Sources	Very High	-
PM2.5 Levels in Air, µg/m3	Very High	9.77
Ozone Concentration, ppb	Moderate	46.50
Diesel Particulate in Air, µg/m3	Moderate	0.81
Proximity to Superfund Sites	Moderate	-
Proximity to Potentially Toxic Industrial Activity	Low	-
Proximity to Hazardous Waste Treatment and Disposal Facilities	Moderate	-

Neighborhood Planning	
Indicator	Description
Community Councils	East Westwood Improvement Association
Community Development Corporations	NA
Community Plans	NA